

Safe+Sound
Maureen Ruskin
SCHC Fall Meeting, 2020



Intellectual Property Statement

The material contained in this presentation is the work of expert(s) selected by the Program Committee of SCHC and is intended solely for the purpose of professional development and continuing education. Material in an SCHC-sponsored presentation does not constitute a recommendation or endorsement of any kind. This material is believed to accurately represent current regulatory requirements and industry standards for hazard communication. However, SCHC cannot guarantee the accuracy or completeness of this information. Users are responsible for determining the suitability and appropriateness of these materials for any particular application.

Safe + Sound

A year-round campaign to encourage every workplace to have a safety and health program





Shifting the Safety Curve

Goal

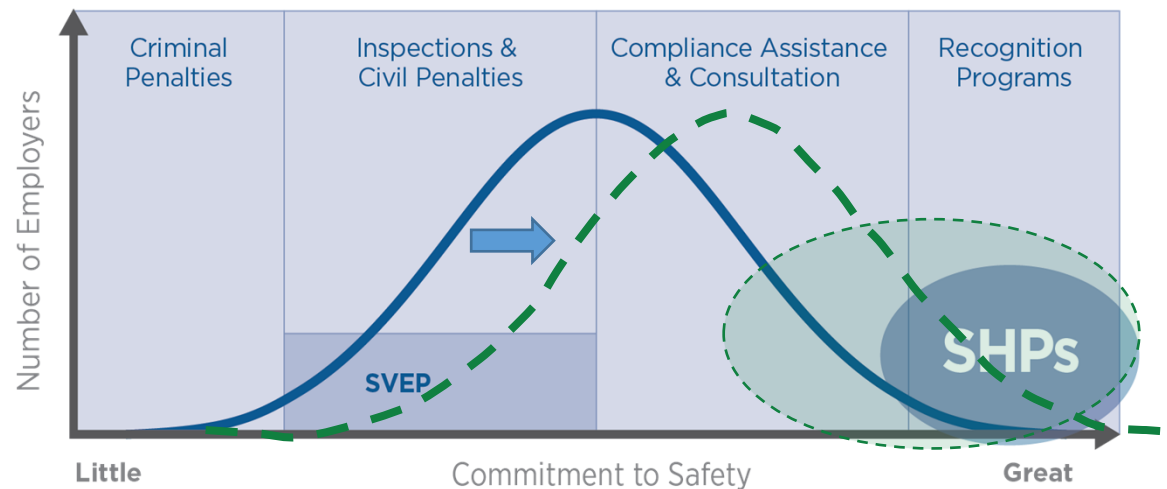
To shift American businesses and organizations along the safety curve

Issue

OSHA's current regulatory and enforcement efforts alone are not going to drive **10 million employers** to better safety and health performance

Solution

- Every workplace should have a safety and health program
- Meet businesses where they are
- Build partnerships





How Do Safety and Health Programs Benefit Your Business?

Prevent workplace injuries and illnesses.

Improve compliance with laws and regulations.

Reduce costs, including significant reductions in workers' compensation

Engage workers.

Enhance social responsibility goals.

Increase productivity and enhance overall business operations.

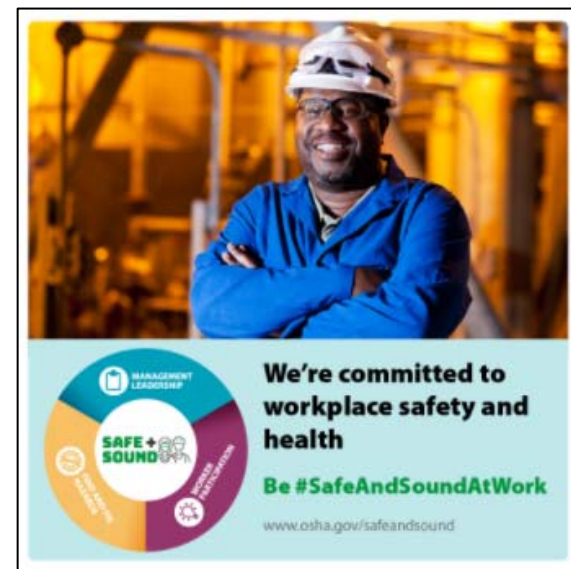


Safe + Sound Campaign

EVERY business and workplace needs a SHP that includes:

- Management Leadership
- Worker Participation
- Systematic Approach to Find and Fix

Many valid approaches: choose one
(OSHA, NSC, ANSI, ISO, state plan standards)



Wherever your business is on the safety curve, take a step in the right direction.





Management Leadership

An organization's management provides the leadership, vision, and resources needed to implement an effective safety and health program.

What We Can Do:

- Deliver a Safety and Health Message
- Establish a Visible Presence
- Formalize and Publicize Your Commitment to Safety and Health
- Take your commitment to health and safety beyond your organization



Worker Participation

Worker participation is engaging workers at all levels in establishing, implementing, evaluating, and improving safety and health in the workplace so that workers understand they are a valuable partner in making their workplace safer and are encouraged to communicate with management about hazards on the job.

What We Can Do:

- Listen and ask for feedback
- Empower workers with safety and health information
- Recognize workers for contributions to worker safety
- Partner for safety and health planning



Find and Fix Hazards

Finding and fixing hazards in the workplace is an ongoing process that helps better identify and control sources of potential injuries or illnesses.

What We Can Do:

- Spotlight hazards and controls
- Create challenges, contests, and competitions
- Conduct analysis to identify hazards
- Identify safety and health processes and procedures



Why participate?

- Kick off a new or energize an existing safety and health program
- Proactively identify and manage workplace hazards before they cause injury or illness
- Improve the bottom line



Develop Your Program

10 WAYS TO GET YOUR PROGRAM STARTED

If you are not quite ready to implement a complete safety and health program, here are some simple steps you can take to get started. Completing these steps will give you a solid base from which to take on some of the more structured actions you may want to include in your program.

- ESTABLISH SAFETY & HEALTH AS A CORE VALUE** 1 Tell your workers that making sure they finish the day and go home safely is the way you do business. Assure them that you will work with them to find and fix any hazards that could injure them or make them sick.
- LEAD BY EXAMPLE** 2 Practice safe behaviors yourself and make safety part of your daily conversations with workers.
- IMPLEMENT A REPORTING SYSTEM** 3 Develop and communicate a simple procedure for workers to report any injuries, illnesses, incidents (e.g., near misses like falls, hazards, or safety and health concerns without fear of retaliation. Include an option for reporting hazards or concerns anonymously.
- PROVIDE TRAINING** 4 Train workers on how to identify and control hazards in the workplace, as well as report injuries, illnesses, and near misses.
- CONDUCT INSPECTIONS** 5 Inspect the workplace with workers and ask them to identify any activity, piece of equipment, or materials that concern them. Use checklists to help identify problems.
- COLLECT HAZARD CONTROL IDEAS** 6 Ask workers for ideas on improvements and follow up on their suggestions. Provide them time during work hours. If necessary, to research solutions.
- IMPLEMENT HAZARD CONTROLS** 7 Assign workers the task of choosing, implementing, and evaluating the solutions they come up with.
- ADDRESS EMERGENCIES** 8 Identify foreseeable emergency scenarios and develop instructions on what to do in each case. Meet to discuss these procedures and post them in a visible location in the workplace.
- SEEK INPUT ON WORKPLACE CHANGES** 9 Before making significant changes to the workplace, work organization, equipment, or materials, consult with workers to identify potential safety or health issues.
- MAKE IMPROVEMENTS TO THE PROGRAM** 10 Set aside a regular time to discuss safety and health issues, with the goal of identifying ways to improve the program.

BE SAFE + SOUND AT WORK

Worker Participation

WHAT IS WORKER PARTICIPATION?

Worker participation is engaging workers at all levels in establishing, implementing, evaluating, and improving safety and health in the workplace so that workers understand they are a valuable partner in making their workplace safer and are encouraged to communicate with management about hazards on the job.

Safe + Sound is a year-round campaign to encourage every workplace to have a safety and health program. This nationwide effort raises awareness of the value of workplace safety and health programs, which can improve businesses' safety and health performance, save money, and improve competitiveness.

For the latest news and information visit www.osha.gov/safeandsound.

SAFETY WALK-AROUNDS FOR MANAGERS

This fact sheet provides guidance to help managers and business owners conduct safety walkarounds to identify hazards in the workplace and communicate with workers about hazards in their jobs.

There are at least two reasons why managers and owners should periodically conduct workplace inspections themselves.

First, inspections demonstrate management's commitment to improving safety and health by finding and fixing hazards.

Second, walk-arounds let managers see for themselves how the safety and health program by working and whether it is effective in identifying and eliminating hazards. Safety walk-arounds can also help managers and owners assess how key elements of the safety program are working. For example, how engaged are workers in the program? Do workers feel they have received appropriate training? Do they know how to report a safety or health incident or concern?

PRE-INSPECTION ACTIVITIES

Preparation is important prior to starting an inspection. Take the time to familiarize yourself with the workplace and operations, and the hazards that have been previously identified.

Pre-inspection activities might include:

- Identify the most hazardous areas by examining past inspection reports, injury and workers compensation records, incident investigation reports, and recent near miss accidents. Plan to focus your inspections on areas where hazards have been identified and check to see if previously-identified hazards have been abated or if further action is needed.
- Talk to workplace safety representatives and other managers or supervisors about their safety observations and concerns.
- If the workplace has a safety committee, meet with the committee prior to the inspection to get their perspective on the most important safety issues.
- Determine what safety equipment you will need to conduct the inspection.
- It is important to lead by example, and wearing the right personal protective equipment (PPE) sets a good example. Practice wearing the PPE to make sure you know how to put it on properly, and that it fits.
- Consider taking the same hazard identification safety training taken by workers, managers, or the safety committee.

ONSITE INSPECTION ACTIVITIES

When on-site, make sure you are wearing the right PPE for each area you enter. Nothing takes away credibility faster than having the wrong PPE or not wearing it properly. Be safe; don't expose yourself to hazards during an inspection.

Limit the size of the inspection group. Larger groups tend to stifle open communication with workers.

<https://www.osha.gov/safeandsound/safety-and-health-programs.html>



Take a Challenge

- Complete actions to put management leadership into practice.
- Share your progress on social media.
- Receive a virtual challenge coin.



<https://www.osha.gov/safeandsound/activities/>



Receive a Monthly Newsletter

SAFE + SOUND 



SAFE AND SOUND AT WORK

HELPING BUSINESSES IMPLEMENT SAFETY AND HEALTH PROGRAMS IN THE WORKPLACE

As we're gearing up for Safe + Sound Week, we wanted to highlight resources that can help you protect your workers and continuously improve your safety and health program.

Recommended Practices for Safety and Health Programs

The [Recommended Practices](#) present a step-by-step approach to implementing an effective safety and health program. These recommended practices note the importance of finding and fixing hazards in the workplace before they cause injuries, illnesses, and deaths in addition to the suffering and financial hardship these events can cause for workers, their families, and employers.



Using Leading Indicators to Improve Safety and Health Outcomes

 [Leading indicators](#) are proactive and preventative measures that can help determine whether your safety and health



Safe + Sound Week

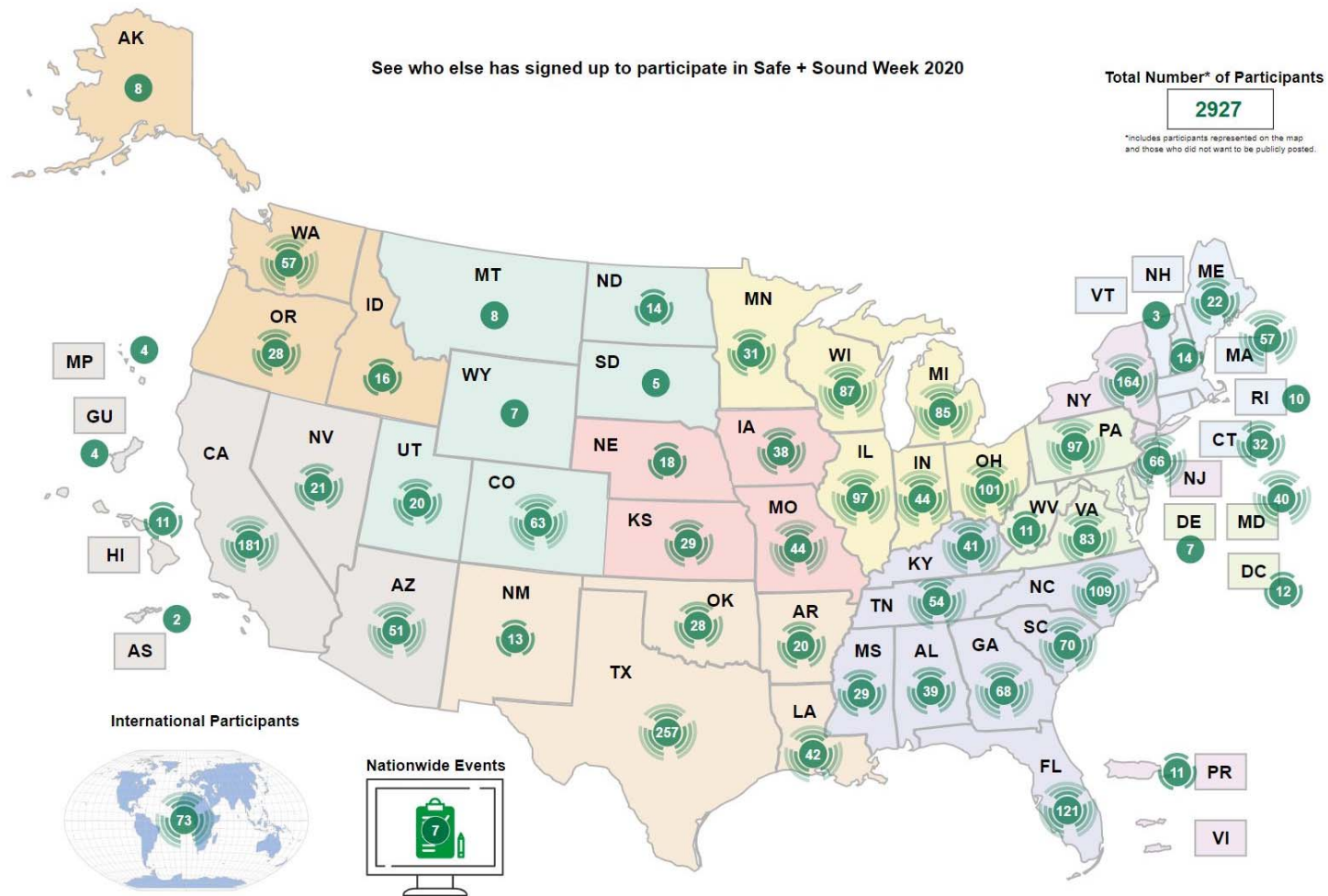
- A nationwide event to recognize the successes of businesses that have adopted programs to improve workplace safety and health.
- This year's event was held from August 10-16, 2020.



<https://www.osha.gov/safeandsoundweek/>



2020 Safe + Sound Week Registered Participants





Engaging Posts



For @OSHA_DOL Safe + Sound Week, this NECA member @Rosendin video explains fall hazards & the simple steps we can take to ensure a safe environment when working at height. NECA members are encouraged to share! hubs.ly/H0tsbGY0 #SafeAndSoundAtWork



Rosendin Labs: Fall Prevention & Testing the Human Limits
For OSHA's Safe + Sound Week, NECA member Rosendin has produced this video on the dangers of fall hazards, and the ...
vimeo.com



Take the SWANA Safety Pledge this Safe + Sound Week to show your commitment to protecting yourself and others from harm every day. #SafeAndSoundAtWork hubs.ly/H0tvg060



As we celebrate #SafeAndSoundAtWork Week, read how ARA member @GROWMARK is "giving rise to several leading indicators of improved safety" by participating in the @ResponsibleAg program: ow.ly/KNP530r3liR. #agretailers #agsafety



Join us for Safe + Sound Week Webinar: How to Manage Heat Stress During COVID-19 - August 14, 2020 from 11:30am - 1:00pm

RSVP by clicking on the link below:
conta.cc/3aj0lJ5

#SafeAndSoundAtWork U.S. Department of Labor @OSHA_DOL



We are #SafeAndSoundAtWork. Are you?

Join us in participating in OSHA's Safe + Sound Week (beginning today) by watching this video from BCSP's Jessica Richardson, MS, CSP, CIT, STSC on ways you can improve worker participation in safety!
ow.ly/b8ZH50AVClc



Thank you to our virtual training host organizations for their leadership in safety education! Interested in hosting or participating in virtual training? Contact the ARTBA Safety Department today. @UWDEOHSCE @PRLTAP @ODOT_Statewide #SafeAndSoundAtWork



Our first webinar of #safeandsoundweek is up and running! "Planning a Safe Show? This is What You Need to Know" is live! Join us at iatse.co/safeshow



This week, we are celebrating #SafeandSoundWeek. Check out our latest blog for information on the ACC OSHA Alliance and how we are constantly striving to create a #SafeandSound workplace. ow.ly/9RkC50AV6to #SafeandSoundatWork





Additional OSHA Programs and Services

- OSHA Training Institute (OTI) Education Centers
- Voluntary Protection Program (VPP)
- Safety & Health Achievement Recognition Program (SHARP)
- On-Site Consultation
- OSHA Challenge



Get Engaged

Signing up for the Safe + Sound newsletter is the easiest way to stay up to date on offerings from the Safe + Sound Campaign. Sign up at www.osha.gov/safeandsound

If you have any questions, please email safeandsoundcampaign@dol.gov